

KERABIG®

NATURAL STONE LOOK
IN AN ECONOMICALLY
LARGE FORMAT.



ströher®
Clinker. Ceramics. Competence.

KERABIG®



**NATURAL STONE IN CERAMIC, PARTIALLY CLAD OR FULLY CLAD,
AND ALWAYS AN EXCITING DESIGN HIGHLIGHT.**

Whether full or part cladding, the natural stone look lends facades a particular flair. This robust ceramic with the Ströher hard glaze comes in nature-inspired colours taken from granite, slate, basalt, marble, porphyry sandstone and wood, and provides long-term protection against the effects of wind and weather. The actual costs of installation are well below those of natural stone and, when combined with an excellent insulation system, energy maintenance costs are also optimized. The large formats are an advantage when tiling and the convenient slurry method can be used – for the natural design accent on your facade.



NATURAL STONE LOOK
IN AN ECONOMICALLY
LARGE FORMAT.

KERABIG®



NATURAL STONE ACCENTS. GLAZED. ECONOMICAL.

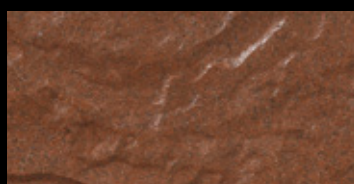


KS01 white

DIN EN 14411, Gr. Bl₁



15 x 30



KS13 tabacco brown

DIN EN 14411, Gr. Bl₁



15 x 30



KS18 tortoiseshell

DIN EN 14411, Gr. Bl₁



15 x 30



KS02 yellow

DIN EN 14411, Gr. Bl₁



15 x 30



KS14 brown flashed

DIN EN 14411, Gr. Bl₁



15 x 30



KS18 tortoiseshell

DIN EN 14411, Gr. Bl₁



60 x 30



KS03 rose

DIN EN 14411, Gr. Bl₁



15 x 30



KS15 chocolate brown

DIN EN 14411, Gr. Bl₁



15 x 30



KS19 marble

DIN EN 14411, Gr. Bl₁



60 x 30



KS05 anthracite

DIN EN 14411, Gr. Bl₁



15 x 30



KS16 eres

DIN EN 14411, Gr. Bl₁



15 x 30



KS20 granit

DIN EN 14411, Gr. Bl₁



60 x 30

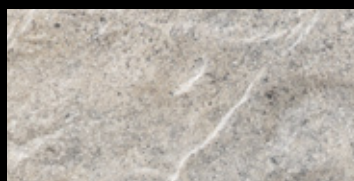


KS06 grey

DIN EN 14411, Gr. Bl₁



15 x 30



KS17 pidra

DIN EN 14411, Gr. Bl₁



15 x 30



KS21 wood

DIN EN 14411, Gr. Bl₁



60 x 30

KERABIG®



NATURAL STONE ACCENTS. GLAZED. ECONOMICAL.

PRODUKTDATEN

KERABIG®

glasiert,
DIN EN 14411



Format-Nr.	8430	8463	8431	8432
Bezeichnung	Kerabig®	Kerabig®	Eckstück	Gehrungspaar geschnitten
Rastermaß in cm	30 x 15	60 x 30	15	15
Herstellmaß in mm	302 x 148 x 12	604 x 296 x 12	221 x 71 x 148 x 12	221 x 71 x 148 x 12
KS01 weiß KS02 gelb KS03 rosé KS05 anthrazit KS06 grau KS13 tabakbraun KS14 braun bunt KS15 schokobraun KS16 eres KS17 pidra KS18 schildpatt KS19 marble KS20 granite KS21 wood	★ PG 461 ●		PG 95 ○	PG 87 ○
		★ PG 476 ●		
Stück pro Paket	18	4	10	10
Stück pro m²/lfm inkl. Fuge	21,00	5,50	6,45	6,45
Stück pro Palette	936	160	-	-
m²/lfm pro Paket	0,86	0,73	1,55	1,55
m²/lfm pro Palette	44,57	29,09	-	-
Pakete pro Palette	52	40	-	-
kg pro Palette	897	720	-	-
kg pro Stück	0,958	4,500	0,898	0,898
kg pro m²/lfm	20,118	24,750	5,792	5,792
kg pro Paket	17,244	18,000	8,980	8,980
Anbruchpauschale	❖	❖	❖	❖



STRÖHER
hard glaze



Suitable for
insulation systems



Wheaterproof



Economic



In compliance
with DIN EN



Fade-free and
colourfast



Easy maintenance
and hygienic



Ecofriendly



Resistant to
chemicals



Glow and
fireproof



Anti-static

HOW TO APPLY CLINKER BRICK SLIPS CORRECTLY TO A FACADE



PREPARATION: Before applying the slips, the visible dimensions of the window and door lintels need to be worked out. It is rare that the reveal and lintel measurements correspond to the standard brick slip sizes. This is why the joints between the brick slips need to be adjusted. The overview dimensions calculated are then also transferred to the outside corners.

PROCEDURE: After working out the heights at the corners of the walls, the angles at the outer corners are applied using the floating-buttering method. "Floating" describes the application of the adhesive using a notched trowel in medium-bed adhesive. "Buttering" means coating the back of the brick slip with adhesive using a spatula or trowel. Before the surface is worked, the connections between stretches of masonry first need to be determined. In most cases, 'disordered' joining is recommended in which five head ends per square metre are included. The head visually forms the front end of an entire brick and in the case of clinker slips is cut from the surface using a tile cutter or a radial cutter.

JOINTING: After applying the clinker slips and after a corresponding drying time (see the adhesive manufacturer's instructions), a start can be made on grouting. Clinker slips with smooth surfaces can be processed by the slurry method. There are a number of grouts on the market but some have plastic and pigment additives. For this reason, you should always consult the mortar manufacturer regarding suitability before choosing the grout. All rough, patinated and textured surfaces are grouted with a conventional pointing trowel and a metal float.



Window lintel perfectly replicated with angles.



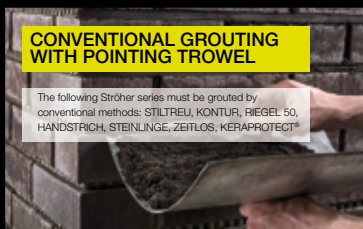
The corner angles are worked using the floating-buttering method.



Use a string to plumb the clinker area. The clinker slips are pressed into the adhesive bed.



The finished surface. Grouting can be done after the appropriate drying time.



Grouting using pointing trowel and metal float along the horizontal.



The vertical joints can be finished more easily with a smaller pointing trowel.



Jointing with a trowel allows you to create different looks.



Sweeping out the joint gives it a corresponding structure.



The finished joint pattern. Full masonry stretches are grouted at one go.

ströher
Clinker. Ceramics. Competence.



Ströher GmbH · Ströherstraße 2-10 · 35683 Dillenburg
T. +49 2771 391-0 · F. +49 2771 391-340 · info@stroehrer.de · www.stroehrer.de

DIE
STRÖHER
GRUPPE
SIGNATURE
CERAMICS
AND CLINKER.